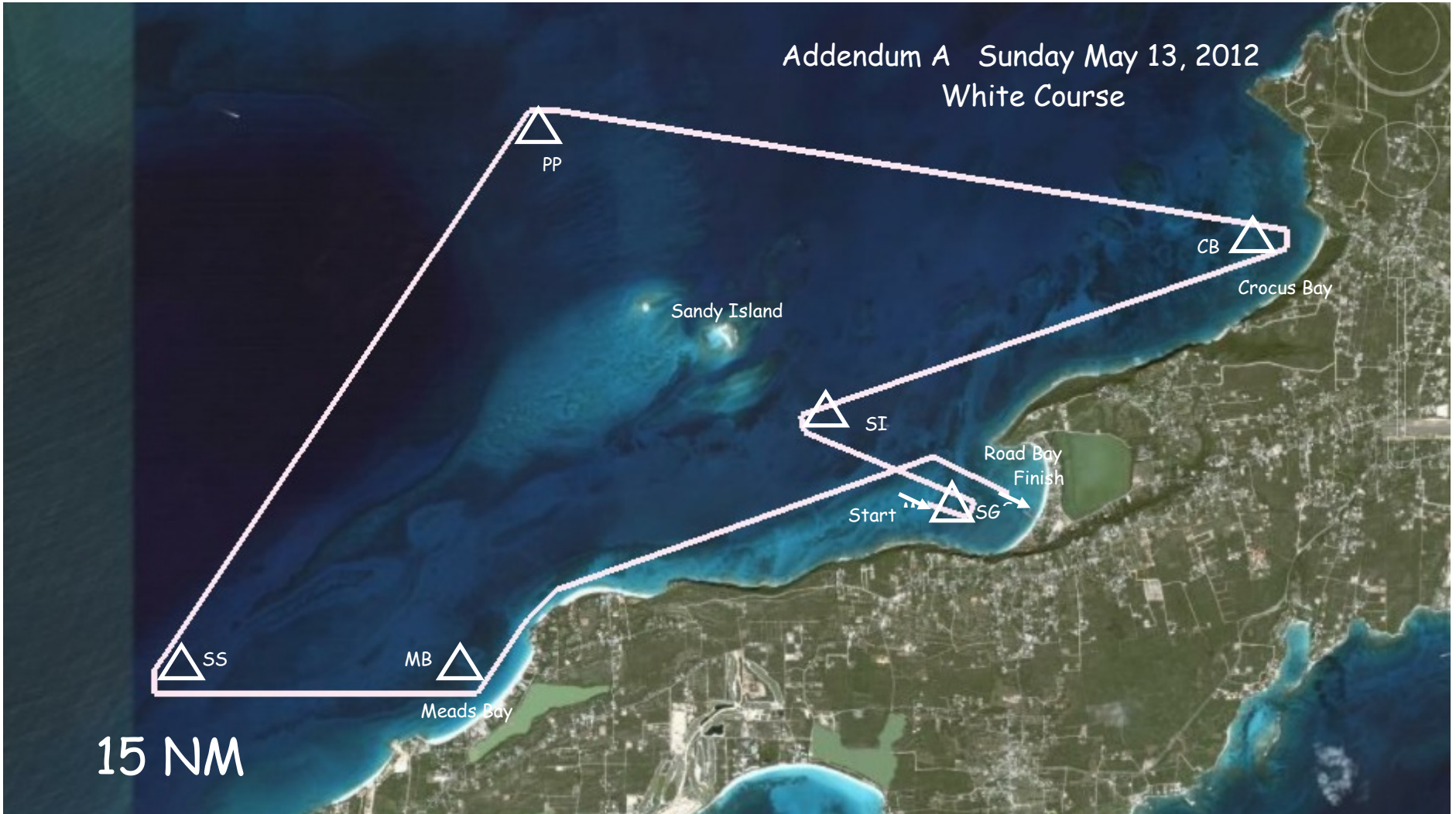


Addendum A Sunday May 13, 2012
White Course



Start (20')	Approx 1 NM SE of Sandy Island	Committee Boat to Starboard		
SG (45')	Approx .3 NM SE of Start	Leave to Port		
SI (30')	SE of Sandy Island	Leave to Starboard	18°12'20"N	63°07'00"W
CB (24')	Inside Crocus Bay	Leave to Port	18°13'13"N	63°04'10"W
PP (45')	NW of Sandy Island	Leave to Port	18°13'46"N	63°08'03"W
SS (150')	N of Barnes Bay	Leave to Port	18°11'00"N	63°10'00"W
MB (34')	N of Meads Bay	Leave to Port	18°11'00"N	63°08'25"W
Finish	Inside Road Bay	Committee Boat to Starboard		

Coordinates are used by mark layers as a guideline and may not be used as a means of redress

4/13/12